

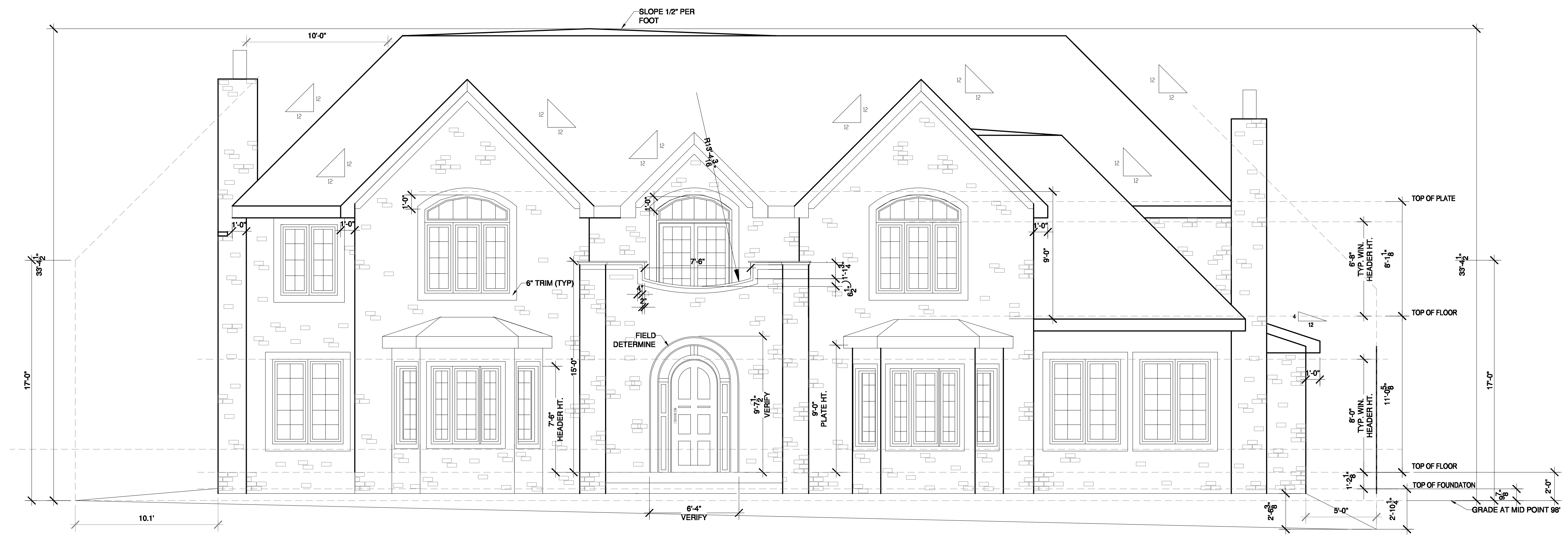
REVISIONS	BY

**Duty of Cooperation**  
 Issue of these plans contemplates cooperation among the owner, his contractor, and BDS. Design and construction are complete and the contractor has performed their services with due care and diligence. Communication is imperfect, and every contingency cannot be anticipated. Any ambiguity or discrepancy discovered by the use of these plans shall be reported immediately to BDS. A failure to notify BDS shall relieve BDS from responsibility for consequences. Changes made from the plans without the consent of BDS are unauthorized, and shall relieve BDS of responsibility for all consequences arising out of such changes.

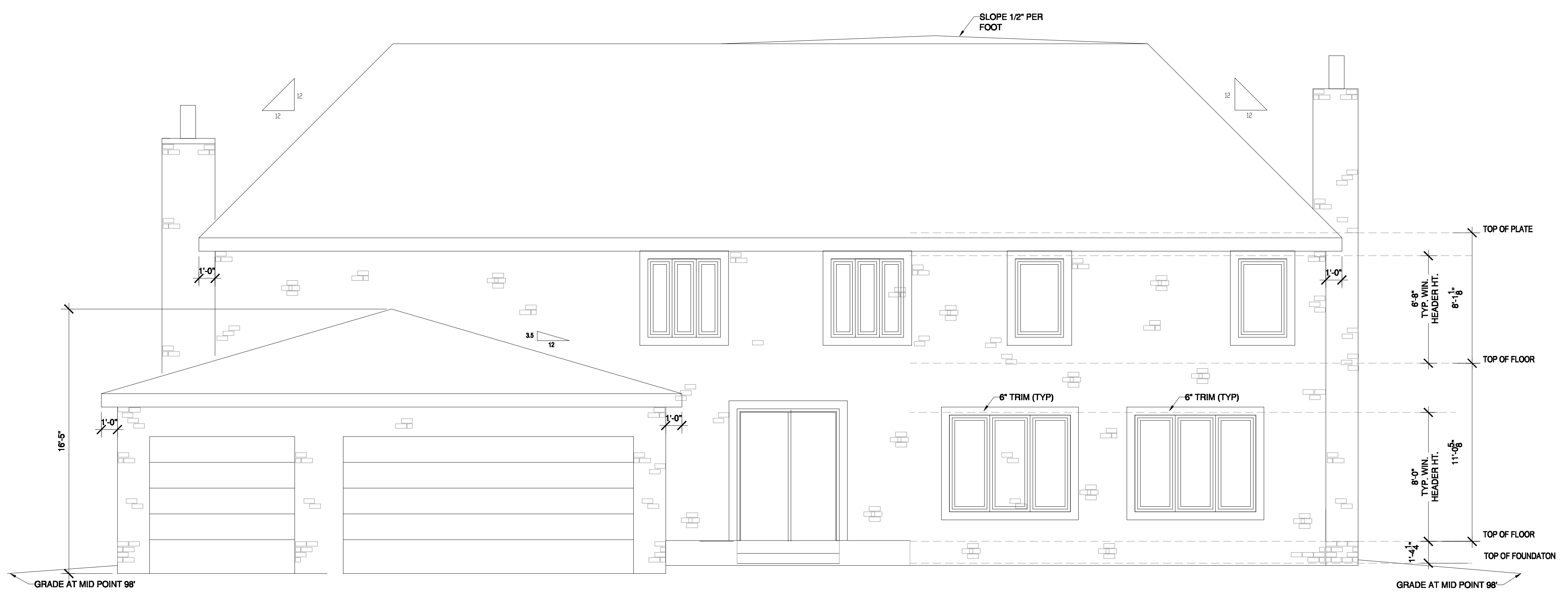
**GROTH RESIDENCE**  
**211 S. CHERRY ST.**  
**DENVER, CO.**

**BDS**  
 BUILDING DESIGN & SERVICES  
 6550 ZANG ST.  
 ARVADA, CO. 80004  
 (303) 277-1799  
 FAX (303) 496-0001

**DRAWN**  
 TP  
**CHECKED**  
 DATE  
 8-5-08  
**SCALE**  
 AS SHOWN  
**JOB NO.**  
**SHEET**  
**A4**  
 OF -- SHEETS



**A401 WEST**  
 SCALE 1/4" = 1'-0"



**A400 EAST**  
 SCALE 1/4" = 1'-0"